

# ISLAND PRINCESS®

Seeing the Panama Canal from the perspective of a ship built specifically for transiting this engineering marvel is something special. And that's exactly what you will experience on Island Princess®. Choose from over 700 affordable balcony staterooms for an even more personal view. And enjoy the myriad amenities and activities onboard — such as an array of specialty and casual dining options including Ultimate Balcony Dining, workout facilities in the Lotus Spa® Fitness Center, golf simulators, paddle tennis, exciting ScholarShip@Sea® courses, a 24-hour Internet Café and much more.



		SHIP FACTS					
		DECK					
PERSONAL CHOICE DINING®		TRADITIONAL	6 • Provence Dining Room				
		ANYTIME	5 • Bordeaux Dining Room				
		SPECIALTY	7 • Sabatini's™ (Italian restaurant)				
			7 • Bayou Café & Steakhouse				
			- • Ultimate Balcony Dining				
		CASUAL	5 • Patisserie				
			14 • Princess Pizzeria				
			14 • Sundaes ice cream bar				
			14 • 24-hour dining in the Horizon Court				
			15 • The Grill & Bar (burgers and hot dogs)				
† • Afternoon tea - • 24-hour room service							
ENTERTAINMENT		THEATERS	6/7 • Princess Theater 6/7 • Universe Lounge				
		HOT SPOTS	6 • Explorers Lounge (nightclub-style performances) 6 • The Princess Casino				
		LOUNGES & BARS	7 • Crooners Bar				
			7 • Wheelhouse Bar				
			7 • Churchill Lounge				
		ACTIVITIES		POOLS	14 • Lido Pool (includes 3 hot tubs) 14 • Lotus Spa® Pool (includes 2 hot tubs)		
SPORTS & SPA	14 • Lotus Spa®, gym and fitness area 14 • Swim-against-the-current lap pool 15 • Princess Links 15 • Digital golf simulator 16 • Center Court 16 • Shuffleboard						
	ENRICHMENT			† • ScholarShip@Sea® 8 • 24-hour Internet Café (wireless access available) 8 • Library, writing and card room			
				SHOPPING	5 • Future Cruise Sales 6 • Boutiques (duty-free) 7 • Hearts & Minds Wedding Chapel 7 • World-class art collection, gallery and auctions		
					UNDER 18		KIDS & TEENS
	12 • Youth Center						
12 • Youth Center pool							
12/16 • Splash pools							

EARLY BOOKING DISCOUNT • RESERVE NOW & SAVE UP TO \$1,300 PER PERSON^

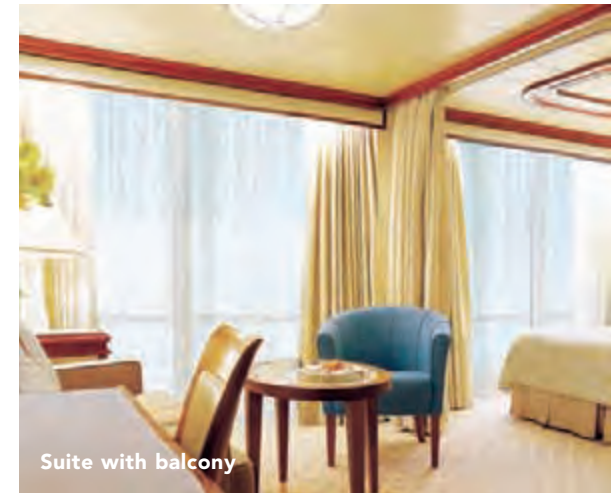
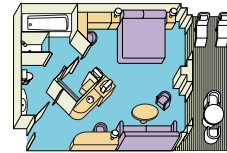
† Location may vary.

## CORAL PRINCESS STATEROOMS

Our spacious staterooms are designed with your enjoyment in mind. Each room includes a refrigerator, TV, hair dryer, a personal safe for your convenience, and plush European-style duvets with luxury 100% Egyptian cotton bed linens. Plus, the following amenities for the category of your choice:

### SUITE WITH BALCONY

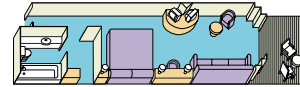
Surrounding you with luxurious accommodations, a spacious suite with balcony includes all the deluxe amenities of a mini-suite, plus incredible premiums. These include luxury balcony furniture, deluxe canapés, fresh flowers, DVD/CD player, free access to a DVD library, one complimentary mini-bar setup, a roomy walk-in closet, upgraded bathroom amenities and complimentary use of the Lotus Spa® Thermal Suite, laundry and dry cleaning services, and web access in the Internet Café. Approximately 470 square feet, including balcony. (Categories PS & VS)



Suite with balcony

### MINI-SUITE WITH BALCONY

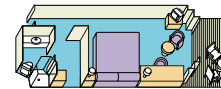
A mini-suite with balcony is substantially larger than a balcony stateroom. It includes all the amenities of a balcony stateroom and these added luxuries: welcome glass of champagne, separate sitting area, sofa bed, luxury mattress and pillows, two TVs, a spacious closet, desk, bathroom tub and massage shower head. Approximately 280 to 302 square feet, including balcony. (Categories AA, AB, AC & AD; Category AF staterooms offer the same amenities but have a picture window rather than a balcony)



Mini-suite with balcony

### OCEANVIEW DOUBLE WITH BALCONY

This impressive stateroom offers the elegance of a balcony with fine patio furniture. It offers all the amenities of a standard oceanview stateroom, including a spacious closet and desk. Approximately 210 to 248 square feet, including balcony. (Categories BA, BB, BC, BD, BE, BF, BG & BH; Category BH has partially obstructed views)



### DELUXE OCEANVIEW

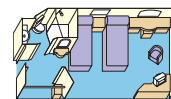
A slightly larger version of an oceanview double stateroom with the same fine amenities, including a picture window. Approximately 212 square feet. (Categories CC & C)



Oceanview double with balcony

### OCEANVIEW DOUBLE

Our oceanview stateroom includes all the amenities of an interior double, plus it features a picture window, providing added ambience and memorable views. Approximately 160 square feet of space. (Categories DD, D, EE, F, GG, G & HH; Categories F-HH have obstructed views)

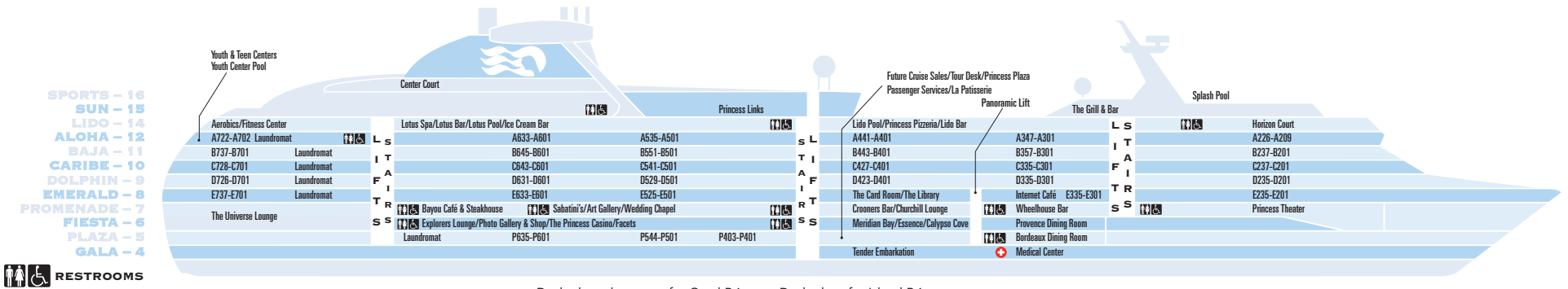


### INTERIOR DOUBLE (NOT SHOWN)

Our interior stateroom is a great value. It features two twin beds that make up into a queen-size bed. Other amenities include a refrigerator, TV, closet and bathroom with shower. Approximately 156 to 166 square feet of space. (Categories II, I, JJ, J, K, L, M & N)

Note: Floor plans and stateroom diagrams represent typical arrangements. Certain staterooms may vary in size and configuration. Square footage varies based on stateroom category and deck location. Call 1-800-PRINCESS for more information.

# CORAL PRINCESS & ISLAND PRINCESS DECK PLANS

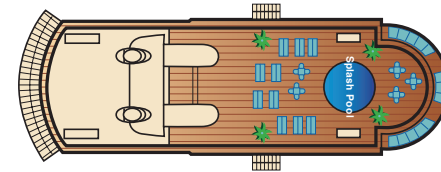
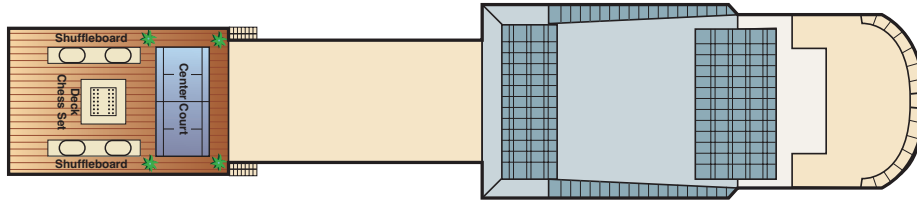


Deck plans shown are for Coral Princess. Deck plans for Island Princess may vary.

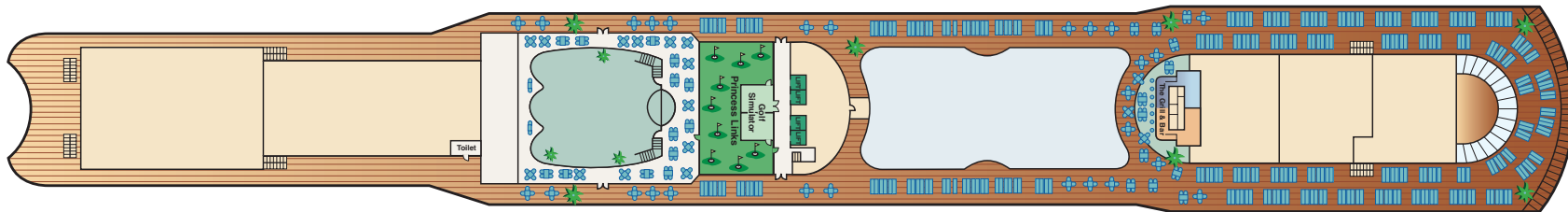
← AFT

FORWARD →

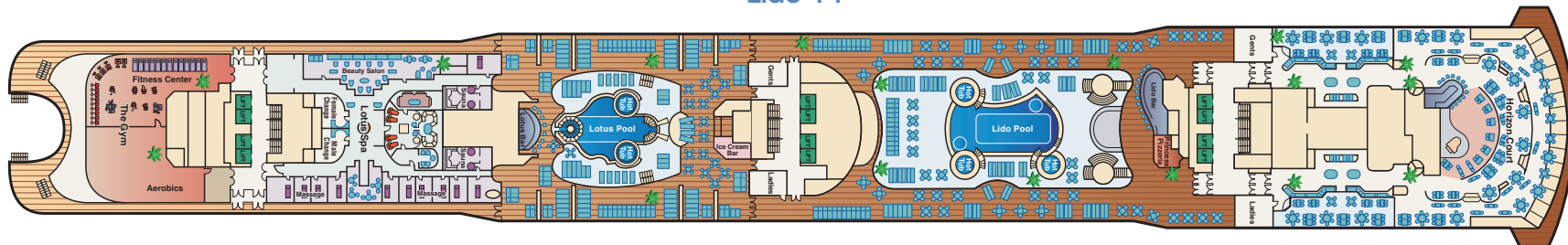
## Sports 16



## Sun 15



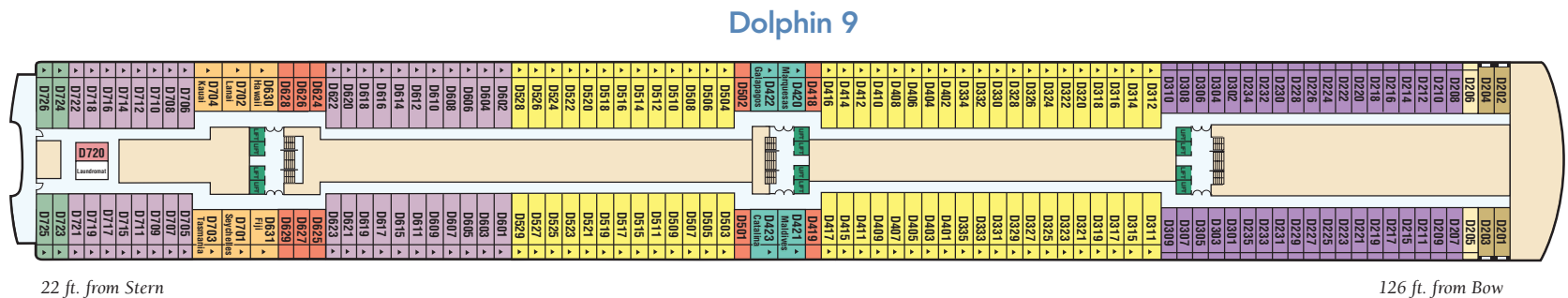
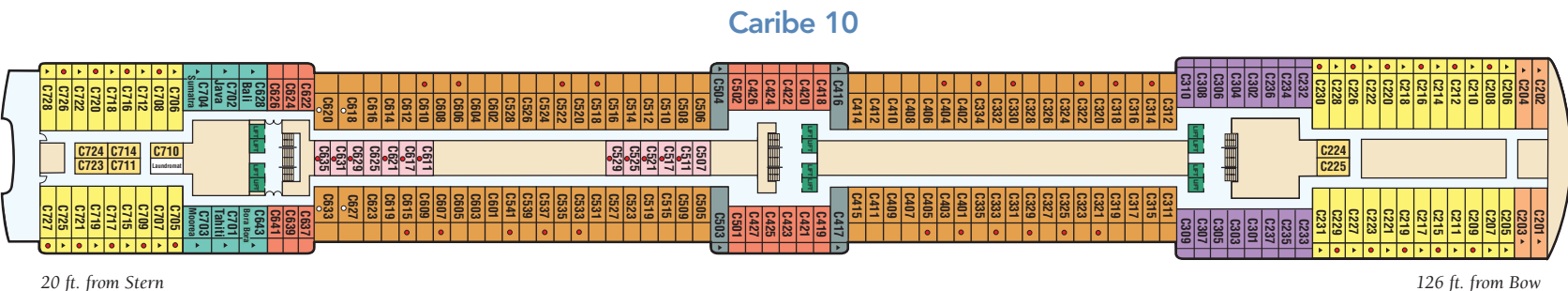
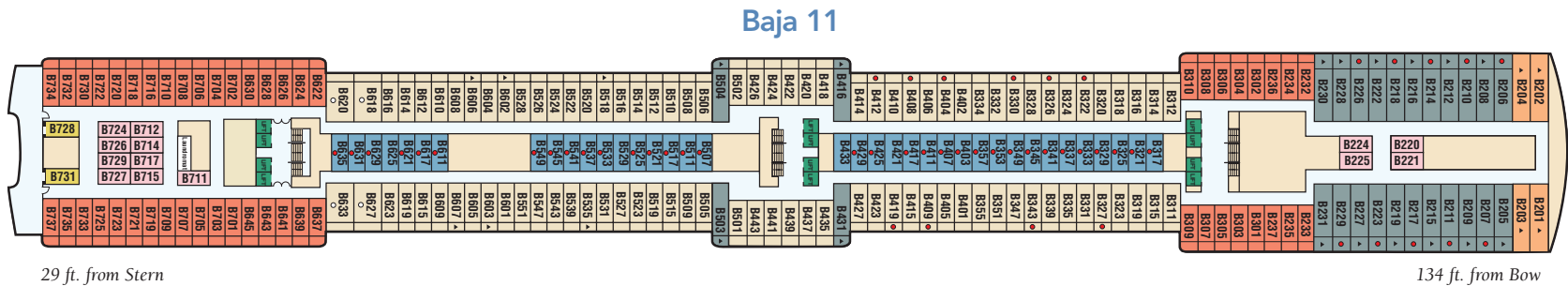
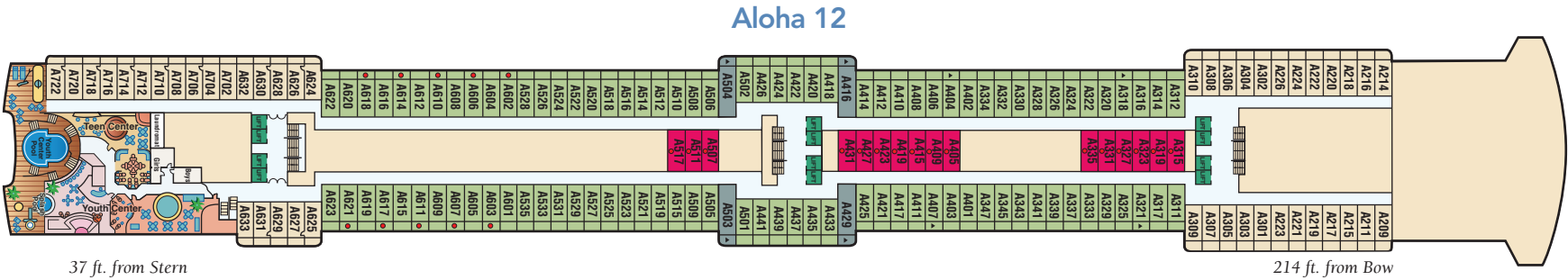
## Lido 14



CORAL PRINCESS & ISLAND PRINCESS DECK PLANS

← AFT

FORWARD →



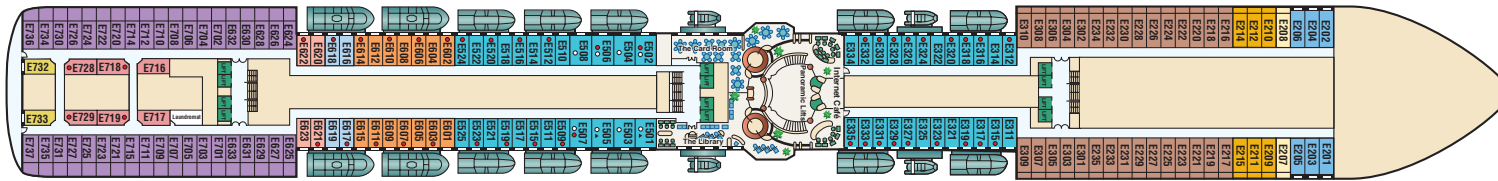
Distances shown are from the bow (forward) to stern (aft) to the nearest stateroom.

CORAL PRINCESS & ISLAND PRINCESS DECK PLANS

← AFT

FORWARD →

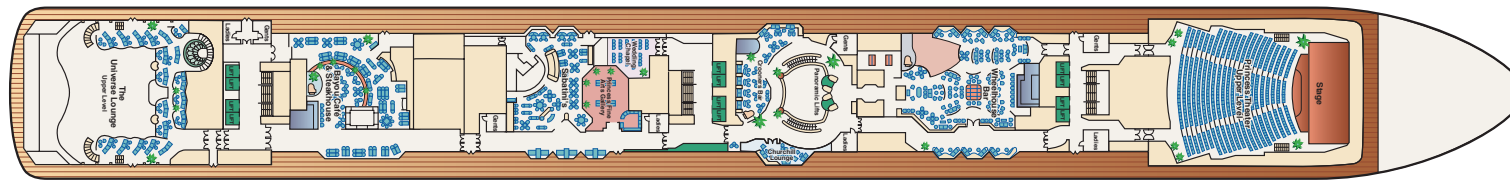
**Emerald 8**



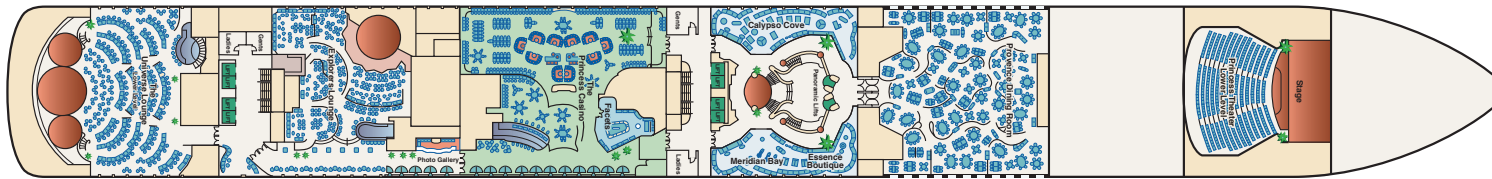
11 ft. from Stern

126 ft. from Bow

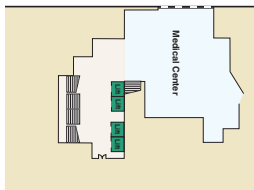
**Promenade 7**



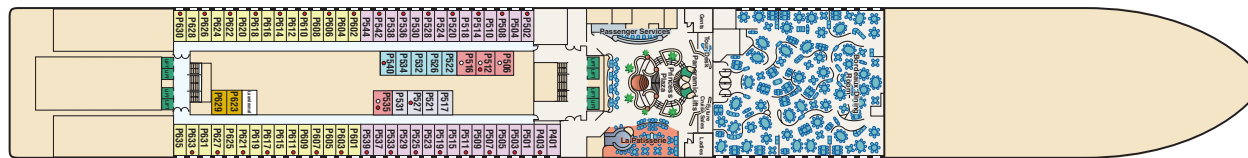
**Fiesta 6**



**Gala 4**



**Plaza 5**



148 ft. from Stern

533 ft. from Bow

**STATEROOM DESCRIPTION**

- PS** CARIBE, DOLPHIN: Premium suite with balcony
- VS** DOLPHIN: Vista suite with balcony
- AS** ALOHA, BAJA, CARIBE: Mini-suite with balcony
- AB** CARIBE, DOLPHIN: Mini-suite with balcony
- AC** DOLPHIN: Mini-suite with balcony
- AD** DOLPHIN: Mini-suite with balcony
- AF** BAJA, CARIBE: Oceanview mini-suite
- BA** CARIBE: Balcony two lower beds
- BB** ALOHA: Balcony two lower beds
- BC** ALOHA, BAJA: Balcony two lower beds
- BD** BAJA, CARIBE, DOLPHIN: Balcony two lower beds
- BE** CARIBE, DOLPHIN, EMERALD: Balcony two lower beds
- BF** EMERALD: Balcony two lower beds
- BG** EMERALD: Balcony two lower beds
- BH** DOLPHIN, EMERALD: Balcony two lower beds (partially obstructed view)
- CC** DOLPHIN: Deluxe oceanview two lower beds
- C** EMERALD: Deluxe oceanview two lower beds
- DD** BAJA, EMERALD: Oceanview two lower beds
- D** PLAZA: Oceanview two lower beds
- EE** PLAZA: Oceanview two lower beds
- F** EMERALD: Oceanview two lower beds (obstructed view)
- GG** EMERALD: Oceanview two lower beds (obstructed view)
- G** EMERALD: Oceanview two lower beds (obstructed view)
- HH** EMERALD: Oceanview two lower beds (obstructed view)
- I** ALOHA: Interior two lower beds
- J** BAJA: Interior two lower beds
- JJ** BAJA, CARIBE: Interior two lower beds
- J** CARIBE: Interior two lower beds
- K** DOLPHIN, EMERALD, PLAZA: Interior two lower beds
- L** PLAZA: Interior two lower beds
- M** PLAZA: Interior two lower beds
- N** PLAZA: Interior two lower beds

visit [princess.com](http://princess.com) for virtual tours and photos of staterooms

Deck plans shown are for Coral Princess only. Deck plans for Island Princess vary.

° Wheelchair-accessible stateroom • Will accommodate third and fourth person ▲ Will accommodate third person \* Two lower beds not convertible to queen; shower only

Note: Some areas of the ship are not accessible to wheelchairs and scooters.